

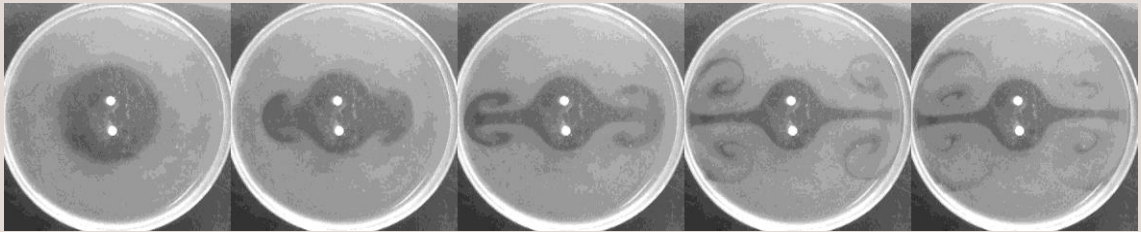
MIMS現象数理カフェセミナー

日時: 2016年10月17日(月) (12:10 – 12:50)

場所: 中野キャンパス8階 談話室

Recent topics on the phenomenon with respect to camphor

Yumihiko S. Ikura (Meiji Univ. MIMS)



Abstract: Previously, the self-propelled system driven by the camphor has been understood not only experimentally but also theoretically, e.g., the traffic jam of camphor boats on an annular water channel. In a lot of these studies, to avoid unnecessary complexity, some elements (such as solutal Marangoni convection and fluctuation of water level) were ignored as inconsequential. However, some further suggestions might become impaired. In this café seminar, I would like to introduce some of camphor systems that these elements are thought to be essential for, and claim that this system will include more suggestions.



問い合わせ:

Abe Aya

Email: aya_abe@meiji.ac.jp

